



THE CLUB CAR



Bulletin 674

Pacific Locomotive Association, Inc.

www.ncry.org

October 2019

Seven Track Panels Installed In One Day



Photo by F.R. Fontes

Burro laying panels at end of track near MP 38.9.

IN THIS ISSUE:

- 3** October Activities
- 4** President's Report
- 6** Along the ROW
- 10** TOL Volunteer Opportunities
- 12** Beer on the Rails
- 15** Volunteer Report

Not as exciting as "TEN MILES OF TRACK LAID IN ONE DAY," however, it was an accomplishment to have our Saturday MOW crew place and connect a record seven track panels all in one day on September 7th at the current east end of our mainline near MP 38.9. Volunteers in the effort included Chris O'Gara, Doug Vanderlee, John Zielinski, Ron Thomas, Dan Colley, Frank Fontes, Mike Strider, and on the Burro Crane, Steve Barkkarie. Factors that helped in the day's effort included

storage of the Burro Crane at Verona, a cool cloudy day, and the assistance of the Wednesday MOW crew who set up the MOW train at Brightside the Wednesday prior. In addition, the methods of placement are down to a science including the methods for staggering of one rail on each panel to make the connection. We are just around the curve for reaching the Happy Valley Bridge just past MP 39.

Mike Strider

(More photos on Page 8)

OUR MISSION: To be an operating railroad museum for standard gauge railroading, past, present and future, with emphasis on the Western United States and special emphasis on Northern California

BOARDING LOCATIONS

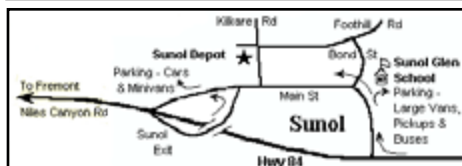
NILES STATION

37029 Mission Blvd.
Fremont, CA 94536



SUNOL STATION

6 Kilcare Road
Sunol, CA 94586



===== BOARD OF DIRECTORS =====

President	Henry Baum	(925) 447-7358	president@ncry.org
Vice President	Mike Strider	(707) 318-2633	vice-president@ncry.org
Recording Secretary	Jim Evans	(650) 697-9033	secretary@ncry.org
Membership Secretary	Linda Stanley	(510) 579-6300	membership@ncry.org
Treasurer	Pat Stratton	(650) 888-8619	treasurer@ncry.org
General Manager	Dexter Day	(408) 234-4956	plancrygm@sbcglobal.net
Director-At-Large	Jim Stewart	(510) 796-2810	james.stewart4@comcast.net
Director-At-Large	Kent Hedberg	(415) 608-3811	hedbergs@sbcglobal.net
Director-At-Large	Gail Hedberg	(510) 207-5524	marketing@ncry.org

===== DEPARTMENTS =====

Brush Cutting	Steve Jones	(510) 289-3559	fcocompost@aol.com
Car Department	Dennis Mann	(650) 726-0167	dmann@coastside.net
Charter Agent/Docents	Jim Evans	(650) 697-9033	charter-agent@ncry.org
Chief Engineer	Mike Strider	(707) 318-2633	mstrider67@gmail.com
Club Car Editor	Barry Lependorf	(510) 431-3401	clubcar@ncry.org
Commissary	Bob Bradley	(510) 910-7024	ncry.commissary@gmail.com
Crew Caller	Jackie Vlasak	(510) 582-2648	traincrews@gmail.com
Gift Shop	Gail Hedberg	(510) 207-5524	giftshop@ncry.org
Hazmat Manager	Doug Debs	(650) 704-1487	dougdebs2472@yahoo.com
Insurance	Roger McCluney	(510) 489-4114	insurance@ncry.org
Legal	Steve Wood, Esq.	(925) 938-6100	wood@wcjuris.com
Member Communications	Linda Stanley	(510) 579-6300	membercom@ncry.org
Museum Curator	Dennis Mann	(650) 726-0167	dmann@coastside.net
New Member Orientation	Glenn Fountain	(510) 673-1084	grfoun10@aol.com
Public Relations	Henry Baum	(925) 447-7358	pr@ncry.org
Road Foreman of Engines	Kent Hedberg	(415) 608-3811	hedbergs@sbcglobal.net
Security Department	Jim Evans	(650) 697-9033	fivechime@aol.com
Signal Department	Curt Hoppins	(408) 723-1154	curt@ncrysignal.com
Station Agent - Niles	John Fenstermacher	(510) 522-7949	johnnsherif@aol.com
Station Agent - Sunol	Donna Alexander	(510) 996-8420	station-agent@ncry.org
Steam Department Head	Alan Siegwarth	(408) 515-4602	siegggy667@hotmail.com
Steam Hosteler Training	Jeff Schwab	(510) 734-6890	jeffs@levinterminal.com
Train master	Mark Miller	(510) 502-8521	mmiller510@aol.com
Volunteer Coordinator	Ed Best	(925) 998-8743	volunteers@ncry.org
Yardmaster	Gerry Feeney	(408) 739-9347	spb-gerry@comcast.net

MEETINGS

Most General Meetings take place at Sunol Glen School in Sunol.

Meetings are held in January, March, May, June, July, and October, but can be subject to cancellation.

General Membership Meeting
Saturday, October 19
at 3:30 pm
Sunol Glen School
Refreshments

Every Wednesday
and Saturday are
WORK DAYS
at the Brightside Yard

CLUB CAR DEADLINE

The deadline for submitting articles and photos for next month's issue of The Club Car is the **20th of this month.**

Submitting articles is easy by e-mail in Word text format.

Send e-mail to:

clubcar@ncry.org

Digital photos may also be submitted by e-mail. Electronic images should be saved as PC format .jpg files with minimal compression (i.e., average to excellent quality). A text file with the photo number, description of photo and identifying the people in them is required.

The editor reserves the right to hold or edit material as necessary.

The Club Car is an official publication of the Pacific Locomotive Association, Inc., P.O. Box 515, Sunol, CA 94586-0515.

The Club Car is distributed monthly to members, sponsors and friends of the Pacific Locomotive Association.

The Pacific Locomotive Association, Inc. is an IRS Code 501(c)(3) non-profit charitable organization. Donations are tax deductible to the extent allowed by law.

The PLA's Federal Tax ID is 94-6130878, the State of California Tax ID is 0501445.

General Meetings are held on the 3rd Friday of January, May & July at 7:30 p.m. and the 3rd Saturday of March, June & October at 3:30 pm at the Sunol Glen School, two blocks east of the Depot on Main Street in Sunol, CA. Members, Sponsors & Guests are welcome.

Items in this publication are Copyright © 2019, Pacific Locomotive Association, Inc. and may be reproduced only by permission with credit to the source.

Views expressed herein are those of the author unless specifically noted by the editor as official policy.

The Pacific Locomotive Association is a member of the Association of Tourist Railroads and Railway Museums. (ATRRM)

NILES CANYON RAILWAY

===== October Activities =====

October 5	1st Saturday	Night Time Train Ride (Sunol) The Alexanders
October 5	1st Saturday	East Track Building, 8 am (Brightside Yard) Mike Strider
October 6	1st Sunday	Regular Train Operations (Steam)
October 12	2nd Saturday	Board of Directors Meeting, 10 am (Brightside)
October 12	2nd Saturday	Members Hunter's Moon potluck & moonlight train
October 19	3rd Saturday	General Meeting, 3:30 pm (Sunol Glen School)
October 20	3rd Sunday	Regular Train Operations (Diesel)
October 26	4th Saturday	Brush Cutting, 7 am (Brightside Yard) Steve Jones

----- Treasurer's Report -----

AUGUST 2019

The Niles Canyon Railway was a hotspot for activity in August. Because of a busy schedule of events we had very good ridership, and therefore above average ticket, commissary and gift shop sales. This means our income was relatively good. On the other hand, we have a time-sensitive and costly emergency project underway with the WP 713 main generator replacement. We have also begun the decorating of the TOL, and final readying of the ROW for this main money raising event. So it will be a relief when TOL ticket

TAX DEDUCTIBLE: The Pacific Locomotive Association is qualified under Internal Revenue Service code section 501 (c)(3) as a tax exempt organization. Thus, donations to the PLA are tax deductible as CHARITABLE CONTRIBUTIONS to the extent allowed by law. Our mailing address is P.O. Box 515, Sunol, CA 94586-0515. The PLA's Federal ID is: 94-6130878, CA ID is: 0501445.

sales kick in, in a few weeks and our cash flow position becomes less of a concern. We are still working our way through a September filled with great events, so all is well.

It is rare for the PLA to ask one of its members to use their own money temporarily to purchase an item for the benefit of the organization. But if a member is asked to do so, I want to encourage them to submit the necessary request and receipt to me as soon as possible after the purchase. Ideally within a week. The sooner it is submitted, the sooner it can be reimbursed, and the better control the PLA has over its expenditures.

From our members and other supporters we received over \$5,800 in donations. \$2,000 was earmarked for the

WP 713 Generator Replacement; \$100 for a new Locomotive Shop; \$1,342.00 was for Bucket Truck Repair, and the rest for our General Fund.

Donors were:

Linda Stanley
Robert Burnett Family Fund
Jorg Linke
Andrew Goodson
Jean-Pol Zundel
Jeffrey Haslam
Alan Teruya
Tom Crawford
Ed Best
Rich and Clarice Anderson
Charles Jellison

Many anonymous cash donations were made at the Snack Bar, the Gift Shop, and at the Chinese Worker Memorial Exhibit in Sunol Depot.

We thank all of you for your generosity in helping fund Niles Canyon Railway's mission and its various projects.

Pat Stratton
Treasurer



E-COUPLING INFORMATION

Website: <http://www.ncry.org>

Email: To Join Members Email List, send an Email to: info@ncry.org

Twitter: [@toots4ncry](https://twitter.com/toots4ncry)

Facebook: <http://www.facebook.com/NilesCanyonRailway>

YouTube: <http://www.youtube.com/user/NilesCanyonRailRoad>



NILES CANYON RAILWAY

President's Report

The summer of 2019 has been an historic time for the PLA and the Niles Canyon Railway. Not that every day isn't historic, as we run on a recognized National Historic Place, the last link of the Transcontinental Railroad. What sets this summer apart is the number of special events we had, and the visibility that those events brought to us.

I think we went a long way to lessen the number of times we hear "Niles Canyon Railway? Never heard of you!" from our patrons, especially the Bay Area locals. We got a lot of coverage on the web and from print media (newspapers and magazines – three articles in TRAINS magazine alone).

As we are just finishing up our last major event for the season (Our static participation in the Alameda County Stroll and Roll where we are basically the Eastern end host) is happening the weekend when I am writing this, I have not had time to go over the totals for all the events, but I am comfortable in saying they were all a complete success.

Until the financial reviews are complete, I cannot say we were as successful as Train of Lights, but I will be happy if overall we come close to breaking even. Some events were more expensive to put on than others and some will have long-term benefits from the expenses we made. So it gets tricky to calculate it all out. The event popularity grew as the summer went on. I do want to point out that the purpose of all of these summer events was not to make money but was to ensure that as many people as possible learned of the importance of the Transportation Corridor to the Bay Area, and the historic time period we were recalling.

We did not count the number of visitors to the 'Chinese Worker and the Iron Road' exhibit in the Sunol Depot, but we know hundreds of people visited it each time it was open. As the season went on, we are aware that people heard about the exhibit and visited us specifically to see it. This means the money spent to prepare the depot (handicap ramp access system, track



Photo by Henry Baum

2019 Golden Spikes in Presentation Box.

lighting, the Howe truss designed and built by Randy Ruiz, and the PLA display (also created by Randy) was money well spent, as those expenses will reap benefits for years to come as we mount other exhibits in that venue. My thanks to everyone who made that exhibit such a showpiece.

There were significant expenses to bring the Skookum (Columbia River Belt line Railroad #7) to the property, but that locomotive was able to generate a significant buzz in the railfan community for our operation, and also brought us to the forefront in relationships with other rail operations. Being the only place in the world where two standard-gauge Mallet locomotives could be run is a significant accomplishment for this railroad. My thanks to the MOW and Steam Department for making those operations a success as well. The response we received in sharing that locomotive's story to our patrons was extremely rewarding, and will serve us for many years to come.

The Krauss-Maffei SP9010 reintro-

duction in July was also a major Railfan event. Operating this historic locomotive on our historic ROW again underlined the value that the PLA brings to the Historic Railroad community, and shows we are covering a lot of bases in achieving the preservation goals of all our operations.

We also did a number of operations that were beneficial to the local community as a whole. Not classic railfan events, but events of interest to everyone. Our Silicon Valley SteamFest in June married the concepts of the Steampunk genre to the STEAM (Science, Technology, Engineering, Art and Math) tenets in a weekend-long celebration that brought visitors to ride the train and to enjoy the artists and musicians assembled as well.

In August we teamed up with the other museums located in Niles to have a weekend-long celebration of the history of Niles proper. The historic Niles Depot Museum, the Essanay Silent Film Museum, and the Pacific Bus Museum

Continued on Page 11

NILES CANYON RAILWAY

----- Membership Report -----

October 2019

Since the last report, we have welcomed 29 new members into PLA membership. These members are: Lynda and Michael Leclair, Kirk and Donna Young, Allison Wright along with Alex and Henry Wernli, Ann J. Lauer, Lance La'shagway, the family of Phil, Anthony and Albert Monte, Margaret Stephens, the Winget family including Sara, Bryon, Georgia and William, Alma Tolentino along with Aivaet, Zayenne and Zac Alex Setove, the Shrago family members Amy, Ethan, Leo and Abe, Juanita Dion-Chiang and Alex Dion, Zane Connally and John Afanasiev. Thanks for joining the PLA!

- 2019 TOL Volunteer Appreciation Train request forms have been mailed to those volunteers who qualified for at least one ticket. If you are one of the PLA's most appreciated volunteers, by the time you read this, you may not only have received your request form but already returned it as well. If not, remember the deadline to assure you receive the tickets you prefer must be submitted to your Membership Secretary by October 13th. Request forms will be accepted after this date of course but don't be disappointed due to lack of preferred date choice and ticket availability.

- As this TOL Volunteer Appreciation Train list was being generated it be-

came apparent there were many dedicated volunteers who could have qualified for more tickets than their ticket request form indicates. These volunteers will be contacted and encouraged to log their hours more consistently, so not only they will have more available to them at this time of year but also the PLA will not lose this valuable potential toward matching grants. It is important for the PLA to have an accurate record of volunteer hours contributed. If you can't log in and out on one of the sign-in sheets, you can E-mail your hours to ncryvolunteerhours@gmail.com. Thank you for your help with this!

- Department heads have been contacted to discover the names of those non-member volunteers who they feel may have qualified for TOL Volunteer train tickets. These volunteers are not in the membership database, but their hours -if logged - have been documented by our volunteer hour tracker. If all has gone according to plan, it is hopeful we will have a Liability Release form on file for them so we can access their contact information and offer them the tickets they have earned.

- If you work alongside or know of volunteers who are not members, please forward their name(s) or encourage them to contact the Membership Secretary so it can be established if they have earned and would care to have tickets for the Volunteer Appreciation

Train for which they have qualified.

- The last PLA General Membership Meeting of 2019 will be Saturday, October 19th, to be held at Sunol Glen School at 3:30 PM. Refreshments will be available and entertainment presented as reported in the September Club Car. As always,

Work Smart – Work Safe !

Linda Stanley
Membership Secretary



Last General Membership Meeting of the year will be at Sunol Glen School on Saturday, October 19th @ 3:30 PM.

Refreshments and Entertainment provided.

BOD Meetings :

Saturday, October 12th in the White House @ 10:00 AM
(Due to Hunter Moon excursion conflict)

Saturday, November 9th in the White House @ 3 PM

Want to Volunteer? Department Contacts are listed below:

BRUSH CUTTING - Clearing the RoW of bushes and trees - Steve Jones - fcocompost@aol.com

CAR MAINTENANCE - Maintenance and repair - Tom Crawford - tom@thecrawfordfamily.net

COMMISSARY - Food service on the trains - Bob Bradley - ncry.commissary@gmail.com

GIFT SHOP - Work in the Sunol Gift Shop - Gail Hedberg - giftshop@ncry.org

MOW CREW - (WEDNESDAY) - Work on track repair, etc. - Ron Thomas - rsthomas@sbcglobal.net

MOW CREW - (SATURDAY) - Work on building track East. Michael Strider - mstrider67@gmail.com

SIGNALS - Install/Maintain signal systems - Curt Hoppins - curt@ncrysignal.com

STATION - (NILES) - Work parking, ticket sales, set-up, etc. - John Fenstermacher - johnnsherif@aol.com

STATION - (SUNOL) - Work parking, ticket sales, set-up, etc. - Donna Alexander - station-agent@ncry.org

STEAM DEPARTMENT - Work in all aspects of steam engines - Alan Siegwarth - siegggy667@hotmail.com

STEAM HOSTLER TRAINING - Prepare a steam locomotive for service - Jeff Schwab - jeffs@levinterminal.com

NILES CANYON RAILWAY

----- Along the Right of Way -----

This was a great month for the Niles Canyon Railway, we got the job done! With a special NCRy run, the Golden Spike was nailed in place at the spot where the railroad had been joined together with track freshly-built from Stockton to existing track that had been built by the Western Pacific through the Canyon to the MP33.0 area. It was at this MP33.0 area that Western Pacific had run out of money however.

Although the railroad was completed years ago, it was fun for those who were there to recreate the scene. The NCRy official Golden Spike has the war scars from its having been driven into the track. You don't have to walk the right of way trying to find it though. We have it and it will be mounted and placed to be viewed. We have held several special events and all has gone well with our ridership. The Skookum No. 7 was involved in many days of operation along with the Clover Valley 4. This has been an exciting month for this railroad!

Thanks to all who were involved in making these activities happen and who made them look good as well. Our ridership enjoyed the experience. Henry Baum needs a big thumbs up for making these operations as successful as they were. He spent a lot of time in making sure that the programs that were set up would pay off. Overall, he called it right on the mark as the operations were a big success!

The Combine is in the Car Shop for lettering. The car when completed will be lettered "SOUTHERN PACIFIC LINES", and then will be turned over to the Decorating crew to make it look good in the TOL. As you can see from the picture, it looks great for the car's times.

Once again, we turn our attention to our endangered species, which is the KM 9010. It is the last of its kind and it sits in the car barn. Now that the impressive engine is to the point of looking great, it has come time to cover this



Photo by Dexter Day

Chris and Dennis are getting the lettering on the Combine completed. The Car is lettered in the Southern Pacific Lines.

engine block and Howard and Bill have taken on the task. When completed and re-installed back in the KM 9010, it will be the only Maybach engine running in the U.S. Wow! We might want to call Brightside the 'Orphanage' for last

of its kind equipment still running. We are blessed!

The Maintenance of Way crew Building East Gang has placed seven track panels in September. This is getting the railroad closer to the Happy Valley

NILES CANYON RAILWAY

----- Along the Right of Way -----

Bridge. The effort is there with this crew which had laid 273 feet of track in one day, not that many feet, but similar to the building of the original railroad that we just celebrated. Our gang working along with Stephen Barkkarie who is doing the roadbed for them, has open space to lay track panels. If all can get done which is a very long shot, we could take one of the TOL out to the EOT. I don't want a short run up hill, instead I want the train at least two train lengths beyond the crossing which is 1,920 ft. We will see. The Sunol train will be the train if this does take place. If it does, enjoy! If we don't, it will take place at a later date.

I like to see Stephen Barkkarie working with our Wednesday MOW crew putting in ties on our right of way. They are not just putting in ties however, but correcting track defects. We are getting the job done and it is costing less. That is called education. Yes, NCRy maintains track during training. We spend a large sum of money on our track and track structure. It does show during inspections by FRA/PUC. Our crews have been doing a great job in keeping our violations to a minimum.

Have you seen that the Brightside driveway upper level is a little bit narrow? Yes, it is, as we are cleaning out the 'back forty' for EPA reasons, trying to get scrap bins to fill up with stuff we don't need. Meanwhile, more stuff will be coming out. The 'back forty' collected everything that we thought we needed in early years. Yes, the NCRy is in the real world and we are working on fulfilling what is required.

Doug Vanderlee continues to push forward with our heavy hauler. He is the only one working on it, looking good as you can see. I can't wait to see this lash up in service. Dump truck on hauler, dump ballast. Wow! That is exciting to track crews.

Stephen Barkkarie will be going to a few schools in the next months. The first school is the track inspecting school at



Photo by Dexter Day

Howard and Bill working on rebuild of Maybach Engine for KM 9010.

Council Bluffs, Iowa for one week. The second school is the air brake school in Ohio for one week. He will have a sign off number which can be used within the USA.

That is it for this month. Hope all

have a great month and make sure you spend time to work safely and also hope to see you along the right of way!

Dexter D. Day
General Manager

NILES CANYON RAILWAY

Seven Track Panels Installed In One Day



Photo by Charles Franz

MOW crew and CV #4 meeting at the red board near MP 38.6 taking a break in the late afternoon. L-R: Chris O’Gara, Mike Strider, Dan Colley, John Zielinski and Frank Fontes (standing on Mongo).



Photo by F.R. Fontes

L-R: Ron Thomas, Doug Vanderlee, Stephen Barkkarie (Burro), and Chris O’Gara setting track panel.



Photo by F.R. Fontes

Burro Crane lifting 7th panel of the day.

NILES CANYON RAILWAY



Photo by Mike Strider

H&H crew cutting rail for new insulated joint bars on mainline 50-ft west of Bond Street to expand existing island circuit for the warning devices.

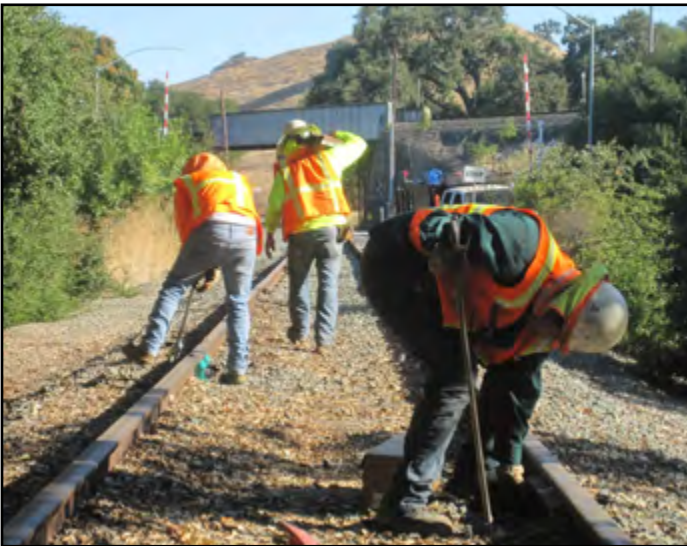


Photo by Mike Strider

H&H installing new insulated joints 250-ft west of Pleasanton-Sunol Road crossing at Verona. The new joints will allow the time for preemption of the advance warning of the County's yellow flashing lights before the gates and lights activate.



Photo by Mike Strider

Newly installed Insulated Joint bars just west of Bond Street.

NILES CANYON RAILWAY

2019 TOL Volunteer Opportunities waiting for you!

October 12th is when our Train of Lights tickets go on sale online at ncry.org. We will again be asking everyone to help with volunteering for many of the spots this year. Because of Thanksgiving being late in the month we are starting the weekend before Thanksgiving so we don't lose any nights of operation this year. Our calendar begins on Friday, November 22nd and runs until

Brush Cutting Report

Our dedicated brush cutters trim trees and brush away from the track and sightlines on 4th Saturdays of the month and second Wednesdays of the month. For the past couple of months, we have attacked some brush target almost every Wednesday because we had the good fortune to have the services of dedicated brush worker, Rhonda Dijeau to assist. We spent three consecutive Wednesdays cleaning up the sightlines at Estates Crossing. Still, the brush grows 7 days a week. I'm not sure if we are gaining or not.

On Wednesday, the 11th of September, a gang of us hiked down under Farwell Bridge to remove a population of re-growth trees touching the bridge in violation of FRA rules. The gang consisted of Wes Van Osdol, Ron Thomas, Pat Stratton, Bob Pratt, Rhonda Dijeau, Dan Mills, Burro Operator Henry Baum, and yours truly. We felled the offending growth and rigged up the slash from under the bridge using the Burro Crane.

In the hopes of tipping the vegetation control scales in our favor for a change, we will mount a week long blitz along the right-of-way on the third week of October. Early NCRY pioneer arborist, Chris Boza, is going to come out of retirement for a week and travel all the way down to the canyon from his home near Spokane and work with us on a concentrated brush control project for 5 straight days. I will report on how we did next month.

**Your Brother in Sawdust,
Steve Jones**

Monday, December 30th, every Friday, Saturday, Sunday, and Wednesday, and a few Mondays. But we will not be operating on Wednesday, November 27th (the night before Thanksgiving) and Wednesday, December 25th (Christmas). We also have 2 nights of charters like last year, Tuesday, December 10th and Thursday, December 12th. Please check online for volunteering this year because all of the volunteer spots are now online. Go to ncry.org and then click on Members'

website under About, and then click on Volunteer Opportunities under Volunteer. You might not be able to see all of the opportunities unless you log in first. So if you want to volunteer for Station Staff in Niles/Fremont, Depot Staff in Sunol, or Gift Shop, you will have to click Members' Website, log in at the top right corner, and then click on all of the opportunities.

Thank you for helping us with a great season again!

donna alexander



**Niles Canyon Railway's
2019 Train of Lights**

Online Ticket Sales October 12

Nov. 22 - Dec. 30	\$30.00 Gen. seating
Every Fri., Sat.	\$60.00 First Class
Sun. Wed.	Dome Car & Parlor Car
Round trips from	\$650.00 Caboose rental
4:30 Niles/ Fremont	(Flat Fee)
7:30 Sunol	An operating railroad museum
NCry.org	510-996-8420



NILES CANYON RAILWAY

President's Report

Continued from Page 4

brought a number of new visitors to the area, and also generated a lot of local buzz.

All of this culminated in our VIP event on September 6th, 2019. We staged our own Golden Spike ceremony at milepost 32.75, 150 years to the day when the first train made it all the way to San Francisco Bay, completing the Transcontinental Railroad, at the point where the Original Western Pacific Railroad tracks and the Central Pacific Railroad tracks met in Niles Canyon.

This fact was recognized and honored by two proclamations. One was from the City of Fremont, and the other from the Alameda County Board of Supervisors. Forever more, the true completion of the Transcontinental Railroad will be known to have occurred in Niles Canyon, on the best-preserved stretch of the Original Transcontinental Railroad. These proclamations are the culmination of the efforts put out by all the volunteers who have worked so tirelessly to make us the premier Railway Preservation Organization in Northern California.



Photo by Chris Hauf

PLA President, Henry Baum, addresses the crowd during the welcoming ceremony.



TOL decorating is progressing smoothly, and we will be ready. Not trying to be a broken record, but we need you to come out and help. TOL time is when we really need people to come out and volunteer. We need help decorating. We will need help onboard the trains in Commissary and hosting the Premium Cars. We will need help with the ticket windows and especially parking help in Sunol. I want to remind everyone reading this that we need YOU to come out and volunteer. In order to have enough experienced volunteers I need YOU to come out and get the

experience YOU will need. Remember, none of our volunteers had experience until they came out and did the job. These jobs are all 'learn by doing' jobs. We have volunteers who will help you learn what is required and share their methods and processes which have been honed over countless hours.

As always, if you would like to discuss any topic in further detail, please contact me by phone at 925.447.7358 or by email at president@ncry.org

**Respectfully submitted
Henry Baum**

NILES CANYON RAILWAY

NCRy Beer on the Rails



All Photos by Dan Sarka

NILES CANYON RAILWAY



The Great Rotary Hot Chili Pepper Challenge

September 3- November 1

Created by the Rotary Clubs of Fremont, Newark, and Union City, the Chili Pepper Challenge is a fundraising campaign created to benefit local and international Rotary service projects. You can support this initiative with a **Direct Donation** or by taking up the challenge and helping to raise funds for a great cause. The virtual challenge takes place at an internet connection near you!

Niles Canyon Railway is a participating charity nominated by the Mission San Jose Rotary Club.

**The Chili Pepper Challenge will match your donation
two-to-one
when you designate NILES CANYON RAILWAY**

Make a Donation to NCRy

Your generous donations are greatly appreciated. Proceeds from this annual fundraiser support Rotary Club local and many international projects. Sponsored by the Rotary Clubs in Fremont, Newark, and Union City, CA. Thank you for your generous gift!

Get Ready to Challenge

Select one chili pepper - as hot as you can stand it! Dr. Pepper, even a peppermint or pepperoni. Take a bite. Repeat until gone. Capture the entire process on video, using your own words to describe the experience. Name at least two friends and challenge them to do the same.

Challenge Your Friends on Facebook

Post the video on all of your social media accounts. Tag the friends you've challenged. In the text of the post, add the hashtag **chilipeppers4charity** and a link to the website so your friends can make their donation.

Visit <https://hotchilipepperchallenge.com>

- Click Donate
- Select Niles Canyon Railway
- Enter Amount



NILES CANYON RAILWAY

150th Anniversary of completion of Transcontinental Railroad



Clover Valley Lumber Co. #4 and Columbia River Belt Line Railway 'Skookum' #7 sit nose to nose in Niles prior to the start of the afternoon's special 150th Anniversary of the completion of the Transcontinental Railroad to the Pacific VIP train.



Another rare sight... With #7 facing West, it pulls the west-bound train past Sunol depot. A view of a west facing steam engine passing Sunol depot is rarely seen as most of the time our engines face East.



The NCRy Steam Department poses with their engines during the canyon ceremony.

All Photos by Chris R. Hauf



Recently repainted by museum volunteer, Chris Hauf, Yosemite Valley Railroad Observation Car #330 pulls up the markers for the day's train.



A unique sight... Skookum #7 rides the Niles wye at the end of the day to return it back to east facing for the next day's photo specials.

NILES CANYON RAILWAY

----- Volunteer Report -----

by Brian Hitchcock

The following is a list of the people who helped run your railroad in August. Please print your name clearly on the sign in sheet so it can be read. If you find that your name is misspelled, please inform me of the correct spelling. You can also send hours by e-mail to ncryvolunteerhours@gmail.com.

ADMINISTRATIVE

Dexter Day
Henry Baum
Pat Stratton
Linda Stanley
Gail Hedberg
Kent Hedberg
Don Gholson
Joe Scardino
Paul Veltman
Peter Midnight
Roger McCluney
Steve Jones

ARCHIVES & LIBRARY

Brian Hitchcock

CAR DEPARTMENT

Al McCracken
Chris Hauf
Denis Murchison
Dennis Mann
Jeff Brazelton
Jennie Benner
Jim McDaniel
Jon Engberson
Marshall Williams
Pete Goodier
Phil Stone
Steve Coon
Steve Van Meter
Tom Crawford
Tony Peters
Warren Benner
Wes Swift

COMMISSARY

Bob Bradley
Bonnie Harrington
Doug Debs
Jack Harrington
Jacqui Szymanski
Mary Asturias

COMMISSARY

Rob Giles
Sally Mills

DEPOT CREW & OPERATIONS

Bob Bailey
Dan Mills
Donna Alexander
Glenn Fountain
Gwen Davis
Jim Gilmore
Joe Scardino
John Burnside
Linda Stanley
Patrice McDonald
Rich Alexander
Rhonda Dijeau
Sally Mills
Steve Jones
Wayne Stoddard

DOCENTS

Charles Smith
David Ernest
Doug Debs
Jim Evans
Leslie Smith
Mary Asturias
Melody Minto
Pat Stratton
Sue Thomas

ELECTRICAL & SIGNALS

Bill Kenney
Curt Hoppins
Derek Lyon-McKeil
George Turner
James Stewart
Joe Romani
John Zielinski
Logan Rubasky

FACILITIES

Bob Bailey
Bob Bradley
Jack Harrington
Linda Stanley
Rich Alexander
Steve Coon
Steve Jones

GIFT SHOP

Charlene Murrell
Donna Alexander
Gail Hedberg
Patrice McDonald

MECHANICAL

Alan Siegwarth
Bill Ross
Bill Stimmerman
Charles Franz
Chris Hauf
Chuck Kent
Dee Murphy
Dennis Mann
Don Stuff
Gerald Dewitt
Gerry Feeney
Henry Chandler
Howard Wise
Jason Hill
Jeff Haslam
Jeff Schwab
John Zielinski
Jon Engberson
Justin Legg
Kent Hedberg
Linda Stanley
Rich Anderson
Steve Barkkarie
Steve Jones
Tom Crawford

MEETINGS

Bob Bradley
Charles Smith
Dee Murphy
Dennis Mann
Dexter Day
Don Gholson
Donna Alexander
Doug Debs
Gail Hedberg
Henry Baum
Jim McDaniel
Kent Hedberg
Linda Stanley
Pat Stratton
Paul Veltman
Ray Strong
Rich Alexander
Steve Jones
Steve Slabach
Tom Crawford
Zona Fowler

MOW & TRACK

Bob Pratt
Charles Navarra
Chris Boza
Dee Murphy
Doug Vanderlee
Frank Fontes
Gregg McNaughton
Hal Briar
James Stewart
Joe Peterson
Joe Romani
John Pelmulder
John Zielinski
Ken Southwick
Mike Pechner
Mike Strider
Pat Hafey
Pat Stratton
Rhonda Dijeau

MOW & TRACK

Ron Thomas
Steve Barkkarie
Steve Jones
Tom Crawford
Wesley Van Osdol

OTHER

Barry Lependorf
Dan Sarka
David 'Zonker'
Harris
Don Buchholz
Pat Warren
Steve Jones
Wayne Stoddard

SWITCHING CREW

Gerry Feeney
Linda Stanley
Rich Anderson
Ron Thomas
Steve Jones

TRAIN CREW

Bent Christensen
Chris Chisom
Chris Hamilton
Derek Lyon-McKeil
Derek Schipper
Donald Kirker
Ed Best
Fred Elenbaas
Gerald Dewitt
Jackie Vlasak
Jim Stewart
John Sutkus
Jordan Hamilton
Jorg Linke
Kent Hedberg
Kurt Olsen
Mark Miller
Pat Stratton

TRAIN CREW

Rich Anderson
Ron Thomas
Scott Crislip
Ted Unruh
Warren Haack

TRAIN OF LIGHTS

Bev Patterson
Bob Moore
Dave Hipple
Denis Murchison
Dexter Day
Don Gholson
Donna Alexander
Dorothy Maestas
Norm Fraga
Jim McDaniel
Joe Scardino
John Burnside
Marshall Williams
Pete Goodier
Phil Stone
Steve Barkkarie
Steve Jones
Sue Thomas
Terry Stokes
Tom Crawford

TRAINING

Dave Aquilina
Glenn Fountain

PACIFIC LOCOMOTIVE ASSOCIATION, INC.

Post Office Box 515
Sunol, CA 94586-0515

RETURN SERVICE REQUESTED

Nonprofit Org.
U.S. Postage
Post Office Box 515
Sunol, CA 94586-0515

PAID

Hayward, CA
Permit No. 188

Time Sensitive Material



Both Clover Valley #4 and Skookum #7 at Sunol.

Photo by Jim Evans