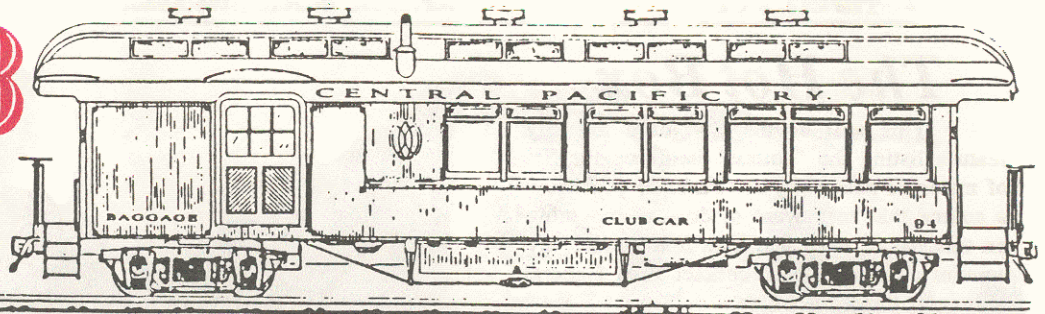


# THE CLUB CAR



Bulletin No. 274

Pacific Locomotive Association

April 1986

## General Manager's Report

### May Will Be a Busy Month for the PLA

By Peter Schulze

I get the chance to write articles for *The Club Car* so often and still can't get all the news into writing. Any suggestion that "things will slow down a little after January 1st" has been inaccurate! Every Saturday and Sunday finds a few or a large number of workers on some new or on-going project.

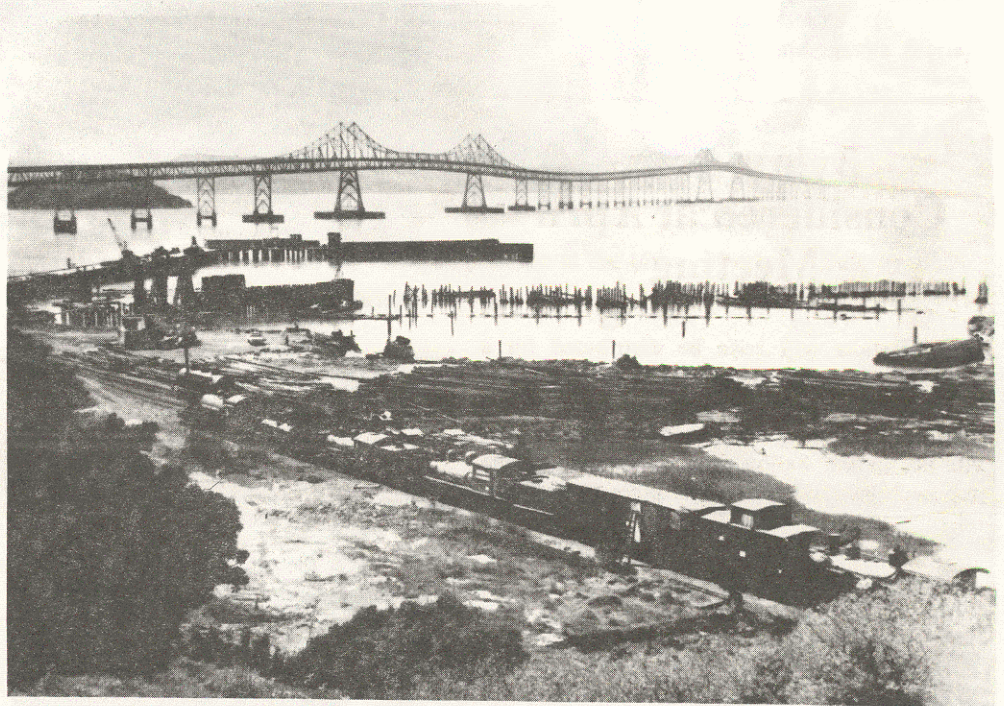
Important progress continues in the Mechanical Department: Most of the locomotives are as secure as possible; the preparations for paint #2 and cleaning #12 was done on March 22 and 23, maintenance work was done on #462 (Thank you **Howard!**), and restoration work continues on #30.

Heisler #1 has been relocated at the Shinn Street yard and is out of the county's parking lot for now! Additional material has been sorted and inventoried at Alameda Creek, and ties and salvaged material have been hauled from Red Rock curve to Alameda Creek. Thanks to a large crew of determined members, the loading ramp is almost fully completed and ready for use at the interchange.

By the time you read this, we will have completed most of the work on trucking the "Chrysocolla" passenger car, #3, #103, and the M200 to Vallecitos Road. We will also be prepared to move #101 to Shinn Street on April 19 or 26.

But please don't conclude that the work is all done and we can kick back until midsummer. Nothing could be farther from the truth.

First, your association needs **YOUR** help during the last two weekends in April for the **LAST MOVE OF PLA EQUIPMENT** off of the pad at the Navy base and for **sorting and inventory** of PLA resources at **Alameda Creek**. We also will need help **loading and**



PLA equipment waits to be moved to the *Niles Canyon Scenic Railway*.

Photo by Jim Evans

unloading the M200 and #101.

The Mechanical Department needs your help on #2 and #12 for Steamexpo as well as on #30, #7, and #1 (Pick your locomotive, work with Mac and make it happen!).

If we get all caught up, we have freight car work at the interchange! Rewheeling the PSPX tank car is planned for May along with work on the WP MoW split flats. The rail around from Red Rock to the old terminal needs to be sorted and stacked and the scrap rail needs to be cut up.

Wayne Emyp needs help right now with work on the push cars needed to build track in Niles Canyon.

With good weather, the next two or three months will be an ideal time to further prepare for our start in Niles Canyon.

Please contact **Dexter Day**, **Mike McQuaid**, **Ray McAllister**, or **me** to get in on one of our many railroading projects.

## Introducing the Niles Canyon Scenic Railway

At the March Business meeting the name "*Niles Canyon Scenic Railway*" was adopted as the new name for our proposed operation in Niles Canyon. The name was submitted by member **Brian Wise**. A logo he designed was also adopted by the membership. Brian submitted three names to go with his logo, the other two being "Niles Canyon & Sunol Railway" and the "No Charge on Sundays Railway".

# The Hot Box

This will be the first of a monthly feature listing the "hottest" items on the list of materials needed by the PLA. If you know a source that may want to donate something on this list or even just lend it to us for any amount of time, please contact PLA General Manager Peter Schulze.

- 1) A Backhoe for use in repairing the roadbed in Niles Canyon.
- 2) A "breakaway" trailer for moving small PLA rolling stock.
- 3) Trucks for hauling material to various storage sites.



Pickering Heisler (now PLA) #5 pulling some coaches back in 1955.

Photo by Buell L. Edison

## Bylaw to Be Considered at April Meeting

Ballots will soon be distributed for a proposed additional amendment to the bylaws of the PLA. Two new categories of membership are proposed. They are published here as they will be on the ballots. A discussion of the proposed amendment will take place at the April meeting.

The Bylaws of the Pacific Locomotive Association be amended to add two new membership classifications, those being:

1. Life member -- a one time donation of \$500.00 or more, \$250.00 for seniors (60 and over).
2. Patron of the Museum -- a one time donation of \$1,000 or more.

These classifications would carry all the privileges of Associate membership and could, upon meeting the necessary requirements, be elevated to active membership status.

### Membership Secretary

## Active Member Attendance Dropping Off

By Jim Evans

Since the beginning of 1986 I have been noting with concern the attendance of our Active membership at the monthly meetings of the association.

The PLA Bylaws state that a quorum (at least twenty-six of our total of fifty active members) must be present for the association to pass on actions which require a vote. The Bylaws also state that active members must attend regular monthly meetings and that after missing two consecutive monthly meetings, active members may lose their Active status.

At the March meeting, where an important vote was taken regarding the name of our Niles Canyon operation, we just barely had a quorum with only twenty-six active members present at the meeting!

As a result of recent limited

participation of our active membership at the regular monthly meetings of the association and work projects vital to our group's future, I would ask that all current Active Members who feel that they can no longer attend our monthly meetings on a regular basis or actively participate in the work projects of the PLA, please consider changing to Associate Membership. This would allow those who over time have illustrated their interest and support to the PLA to achieve Active Membership status.

Please send all Associate and Active renewals and any address changes to Membership Secretary Jim Evans, P.O. Box 451, Burlingame, CA 94011-0451. Please do not send renewals to our San Leandro mailing address or delays may result.

### Pacific Locomotive Association Board of Directors

- President . . . . . Michael McQuaid  
 Vice-President . . . . . C.G. Heimerdinger, Jr.  
 Recording Secretary . . . . . Madeline Iverson  
 Membership Secretary . . . . . Jim Evans  
 P.O. Box 451, Burlingame, CA 94011-0451  
 Treasurer . . . . . Dave Rousar  
 General Counsel . . . . . Stephen H. Slabach  
 General Manager . . . . . Peter Schulze  
 (415) 797-8613

### The Club Car

*The Club Car* is the monthly newsletter of the Pacific Locomotive Association and is distributed to all members. All submissions will be considered for publication and will only be edited for space and clarity.

Editor . . . . . Alan Teruya  
 846 Seminole Dr., Livermore, CA 94550  
 Printing By Pacific Western Graphics.

## In Memoriam To Bob Leland

By Ray McAllister

Ours is a special group that likes trains in general with some having a fondness for steam engines in particular. It is an estoric cult where human beings are attracted to powerful machines that can be controlled by a couple of levers. Bob Leland was such a person.

He gave freely of his time and effort in two of our most important endeavors; equipment maintenance and public relations. Bob was a steady at the Point on Saturdays and got involved in whatever needed to be done, be it cleaning, painting, greasing a locomotive, cutting wood for the No. 3, or any type of mechanical repair or construction project. I'll always remember the special times we had building the "Chrysocolla" and making up the air piping for #12. He was one of the PLA's most ardent champions, and never tired of telling our story while on engine crew to all those that would ask questions. On many occasions he came to the Point during the week to conduct guided-tours of our equipment for a grade school class or a special interest group.

The pleasure he derived from firing or running #3 or from relating to people was always evident by the smile on his face.

We will miss you, Bob.

*[Editor's Note: PLA member Robert A. Leland passed away on March 7 at the age of 72 leaving a wife, a daughter and a son. He was a graduate of Stanford University, a 40-year engineer for the Walter S. Leland Company, and a member of the Walnut Creek Rotary Club.*

*Contributions may be made in his memory to the John Muir Foundation, 1399 Ygnacio Valley Rd, Suite #36, Walnut Creek, CA 94598.]*

Spring is Coming!!!! THIS MEANS MORE LANDSCAPING. .which means more landscape crossties are needed. the PLA still has some good landscape-grade crossties available for a donation. Contact Phil Orth or Peter Schulze. We hope to obtain a donation of \$3.00 to \$5.00 each, depending on the condition.



Bob Leland (center) posed with Mike Sullivan, Ray McAllister, and #3 at a special operation at Redwood Park last September.

Photo by Jim Evans

### Mechanical Department

## #2, #12, and #1269 Prepared for May Operations

By Ray McAllister

The major effort in March was the sanding, scraping, and wire brushing on #2 and #12, getting them ready for repainting. The repainting is the cosmetics for operation at Vancouver's Steamexpo. Thanks go to the groups that turned out on the weekends of March 23 and 24 and March 29 and 30 to work under the direction of Lou Bradas on this.

Allan Shelly continues to head up our efforts with the State Museum in Sacramento for the repairs and the boiler inspection on #1269. As of the time of this writing, the removal of the dome cover revealed the seats in the throttle valve and on the dry-pipe elbow joint will both have to be machined. The throttle valve has been removed and taken to a machine shop, and the dry-pipe elbow will be machined in place. Jack McKinney, who functions both as the State of California inspector and the inspector for the State Museum insurance underwriters, has decided after a preliminary

look that the lagging must be removed from the barrel of the boiler. This will allow him to include an ultra-sonic test of the boiler shell as part of the annual certification. The objective is to complete the repairs to the throttle valve and install the new blow-down valve, and get the boiler inspection certificate, to have the locomotive ready for the start of the museum operations in early May.

## Special Board Meeting To Be Held

A special board meeting will be held on April 25 at 8:00 at the regular meeting place, St. Christopher's Church in San Leandro. The subject of the meeting will be the appointment of three project managers who will handle various aspects of the move into Niles Canyon. Also, the formation of a Business Manager position will also be discussed.

## March Meeting

Much of the discussion at the March business meeting surrounded the museum's move.

Following the reading of the minutes, the Treasurer's report which showed a slight loss for the month, and the voting in of **William B. Garner, Frank Piggott, Frank Presley, and Jeffrey D. Williams** as new Associate members, Public Relations Committee Chairman **George Childs** presented the proposed names for the Niles Canyon operation. It was moved, seconded, and approved that both Active and Associate members would be allowed to participate in the initial round of voting for the new name. Each member was given a ballot and asked to vote for three names.

While the ballots were being tallied, President **Mike McQuaid** moved on to other business. The Navy had granted permission for leaving seven pieces of equipment on the pad. He and SP had talked on future moves of PLA equipment. Kaiser has given verbal permission to store another diesel locomotive in Pleasanton. County Supervisor Ed Campbell has been informed of PLA intentions to buy ties. We have received the lease from GE to store equipment at the Valecitos site. Industrial Rail will sell all of the ties in the ground left over after SP picks theirs for \$60,000 (Approximately \$4/tie).

General Manager **Peter Schulze** talked about projects under way. The ramp for loading equipment has been completed.

**Ray McAllister** reported on Expo preparations. He is concerned about SP's lack of commitment regarding movement of locomotives to the BN.

**George Childs** announced the top six vote getters for the new name. Active Members were then allowed to vote for one name with a 2/3 majority needed to win. The second vote narrowed the choices to two: Central Pacific Railway and Niles Canyon Scenic Railway. After a final hand vote the winner was *Niles Canyon Scenic Railway*, a name submitted by **Brian Wise**.

A motion was made and seconded to approve Brian's logo for NCSR. After some discussion it was approved.

**Craig Wilson** announced he is working on a map for use in the environmental studies. The Duffy Mott cannery is now demolished.

**George Childs** reported on the PR Committee. The Buy-A-Tie program and the display of #3 in Ardenwood Park were mentioned.

**Mike Nesmith** reported for the financial committee. Among the items



PLA members prepare #2 for a new coat of paint before she heads off to Vancouver.

Photos on this page and opposite by Jim Evans

discussed were excursions, accounting procedures, and inventory of assets.

After discussion concerning the purchase of ties in Niles Canyon, a motion was made and seconded that a "First Mile of Ties" fund be set up to reimburse the general fund for the cost of the buying ties in Niles Canyon. The pledge drive would also be formally terminated. The motion carried.

A motion was made and seconded to revise the Article 7 of the Articles of Incorporation to meet current tax laws. The motion carried.

For the Good of the Order it was announced that **Bob Leland** had passed away. **George Childs** announced there was a caboose for sale in Vacaville. **George** was thanked for his efforts in presenting the candidates for a new identity and **Dave Rousar** was thanked for his efforts in finding solutions to our financial problems.

## Photos Needed For Calender

The PLA Calender Committee needs photographs of PLA equipment under steam for use in a 1987 calender. The pictures submitted may be in black and white or in color, but the calender will be printed in black and white and photos will be enlarged to 8" x 10". If an 8 x 10 B&W copy of the photo is not available, then the submitter should be able to provide a negative.

All submissions should have the following information on the back:

- 1) Name of photographer
- 2) Address
- 3) Date Taken
- 4) Where photographed.

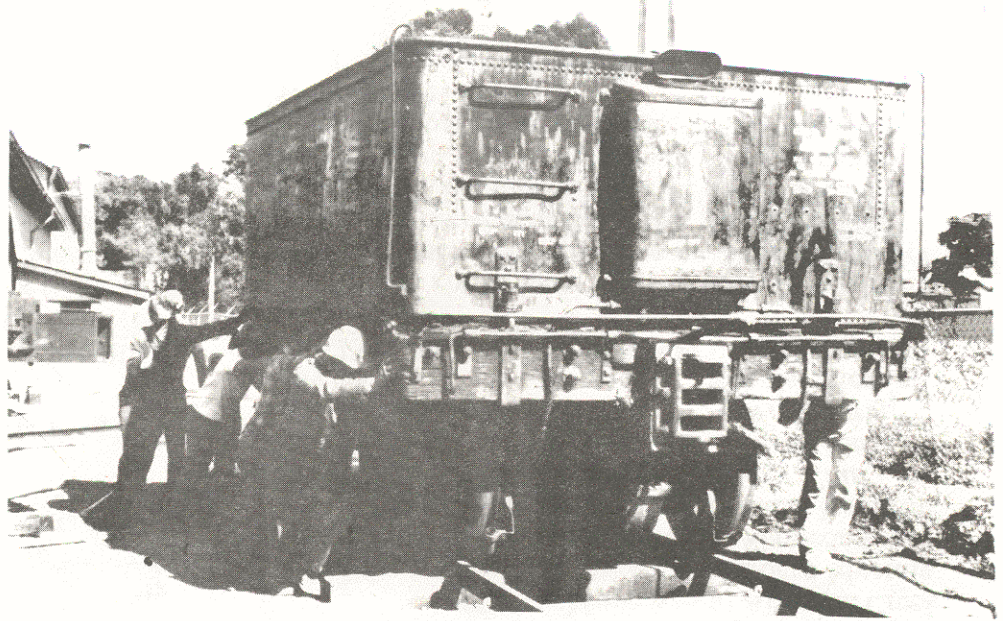
Please bring the photographs to the next meeting or contact Madeline Iverson or John Follansbee.

# March Roll Call

By "Bones" Andrews

We had one weekend building snap track and moving #1 at Fremont yard. The rest of the month at Castro Point has been spent preparing #2 and #12 for Vancouver, building the ramp for loading, and doing miscellaneous track repairs.

This is a list of people who worked this month and how many times at Castro Point: G. Adams (2), B. Andre (1), B. Andrews (7), C. Barnes and son (1), C. Blake (2), B. Burger (4), M. Bozzini (4), L. Bradas (6), E. Chase (2), J. Chase (1), J. Cox (1), D. Day (7), M. Duffy (2), W. Empey (1), J. Evans (3), T. Fillipo (3), D. Hoffman (1), C. Holombo (1), M. Maksel (6), C. Marks (2), R. McAllister (5), M. McQuaid (3), P. Orth (4), R. Peterson (3), A. Ramsey (2), E. Ryan (1), M. Schneider (3), J. Schroefler (2), P. Schulze (5), S. Slabach and son (2), M. Wilson (1), B. Wise (6), H. Wise (7).



A bunch of PLA 0-2-0's (above) move #1's tender at the Shinn St. yard. (Below) PLA members move 1:1 scale "flex track".



Video Tape Rental is \$5.00 per week or rent two tapes and get the third one free.

You can rent by mail for the rental fee plus postage for both ways.

See Charlie Blake on Saturdays at the Museum or at the monthly meetings, or call him at (707) 552-2394 to reserve tapes or order tapes by mail.

- 1 Destination Tokyo (WWII)
- 2 N&W Class-J #611
- 3 The General (movie)
- 4 Thunder of Steam in the Blue Ridge
- 5 The Cass Scenic Railroad
- 6 Farewell to Santa Fe Steam
- 7 Hurricane Express (movie)
- 8 Chattanooga Choo-choo (movie)
- 9 Steam Over Sherman
- 10 UP 6900's: The Centennials
- 11 C&O 614TT Coal Tests
- 12 Danger Lights (movie)
- 13 Diesel on the UP
- 14 Classic Railroads (PLA #2, #4, & #5)
- 15 Double Heading on the Sierra
- 16 Once Upon the Wabash
- 17 Legend of the Rio Grande Zephyr
- 18 Union Pacific Steam 1981
- 19 Union Pacific Challenger #3985
- 20 Rio Grande Work Train '81
- 21 Southern Pacific Daylight #4449
- 22 Railfair '81
- 23 Rio Grande Narrow Gauge in the Fifties

## Members Help PLA Choose New Name

The following members submitted names for our new Niles Canyon operation: "Bones" Andrews, John Bonwell, Dave Burla, John Follansbee, Dan Lovett, Jim Noble, Matt Maksel, David Ray, Patty Schulze, Carol and Michael Sullivan, and Brian Wise.

The following members submitted logos: "Bones" Andrews, John Bonwell, Dave Burla, Dan Lovett, Matt Maksel, Jim Noble, David Ray, and Brian Wise

## MEMBERSHIP APPLICATIONS

Applications for Associate Membership may be requested from the Membership Secretary. All applications must be endorsed by two members and be returned with dues for the first year.

To be eligible for Active Membership, one must have been an Associate Member for at least six months and have regularly attended meetings in that time. The number of Active Memberships is limited to insure a quorum at club meetings.

---

---

## April Meeting

To be considered for Active Membership: Matt Maksel. Matt has been very active in numerous PLA activities for the past several years and will certainly be a valuable addition to our Active Membership.

To be considered for Associate Membership: Chris Robinson of Vallejo. Chris claims to be good with tools and has helped us with our diesel locomotives in the past.

### *Special Entertainment by Ted Wurm*

Entertainment at the April meeting will be films provided by contributing sponsor and noted railroad author and historian **Ted Wurm**. Ted's films will cover narrow gauge railroading in Wales and the Isle of Mann. He may also include interurbans in Yorkshire.

## Regular Meeting Place

Regular meetings are held on the third Friday of every month at St. Christopher's Church at the corner of Via Toledo and Hacienda in San Lorenzo.

---

---

## PLA Calendar

- April 18. . . . . Regular Meeting  
April 19 and 20 . . . . . Move M-200 to Vallecitos  
Removal of remaining equipment from pad  
Move Rail to Alameda Creek  
April 25. . . . . Special Board Meeting  
April 26 and 27. . . . . Sort Material, Alameda Creek  
Removal of remaining equipment from pad  
May 1 . . . . . Final Deadline for May *Club Car*  
May 3 and 4. . . . . Work Party,\*\*  
May 10 and 11. . . . . Work Party,\*\*  
May 16 . . . . . Regular Meeting  
May 23 to June 1. . STEAMEXPO, Vancouver, BC

\*\*Sites and times have not yet been determined. Please contact Peter Schulze or Dexter Day for information on what activities are going on. Projects will include loading #2 and #12 on flatcars and sending them off to Vancouver, maintenance of rolling stock, and building push cars for use in track laying in Niles Canyon.