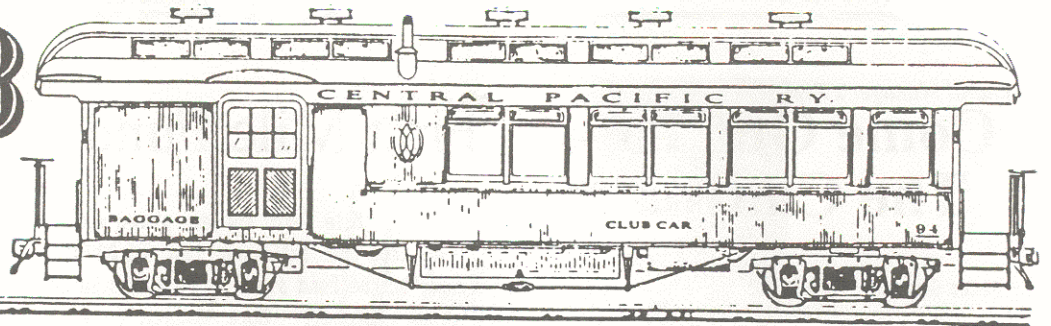


THE CLUB CAR



Bulletin 281

Pacific Locomotive Association

November, 1986

V-P and Operations Manager's Report

Great Progress In October

By Dexter Day

As the sun sets behind the hills at Brightside and the shadows fall upon the tipple it's now time to pack up the tools and head for the watering hole in Sunol to plan the next day's work.

This might sound like a strange way to plan a railroad, but so far it has worked. The guys working in the canyon know best how to get the job done with what we've got. Believe me when I tell you our methods aren't in any textbooks, but the job gets done.

For instance, when the Seabee reserve unit couldn't finish clearing the culvert at MP 34.0 due to adjusted orders, CRAIG WILSON and a handful of workers started digging with pick and shovel to find the culvert's openings and found it was filled with dirt. PHIL ORTH and his tunnel rats started to dig out the 17" x 48" culvert so we wouldn't have to tear it out and replace it. Watching these guys work reminded me of the movie "The Great Escape" with the only difference being we didn't have to disguise the dirt; it blends in nicely with the surrounding landscape. This area is now known as Desolation Gulch. (Don't look Craig, you won't find it on your maps.)

The work in October went well. The best news was that we got some rail at Levin Metals that we thought was going to scrap. Pete did some fast talking to get us six truck loads of rail that we thought was gone for good. He also took several truck loads of 85 lb. tie plates to Castro Point. Thanks to GEORGE at Levin, we are six truck loads of rail closer to finishing this railroad, but the job would never have been done without driver JOHN DILLMAN and RICH at Statewide Trucking who provided the trucks through the week of October 20.



Craig Wilson directs a Seabee with hand signals as they clear out tree branches.

Photo by Alan Teruya

Seabees Help PLA In The Canyon

By Alan Teruya

On October 18 the crew working in the canyon got a big help from the U.S. Navy when

JOEL COX and his gang got all the material available on Patterson Pass. It belongs to the County but is for our use.

The bad news for the month is that the Hough loader stripped a gear in the rear axle. If we can find the part, the Hough should be back on line by mid-month. Also the clutch on the boom truck went out, however getting this fixed should be easier than getting parts for the Hough.

Starting next month, call 415-345-1790 on Thursday night to get a tape briefing on the weekend's projects. When you call the tape please let me know what day you'll be working and leave any message or suggestions you wish. Try to make the party if you can. The fun is just starting; get in on it.

a Seabee reserve unit brought in heavy equipment to help move brush and dirt.

Petty Officer KEN JOHNSON and nine members of A COMPANY of the 302nd Regiment of the Naval Construction Battalions did various tasks. A dirt road was graded and compacted between the driveway at the Ki-lite crossing and the tipple. Dirt along the right-of-way was picked up with a loader and moved out with a dump truck. The hydraulic jaws on the loader ripped out five times more tree limbs and brush in fifteen seconds than two PLA members took out in fifteen minutes with a machete.

JEFF WILLIAMS, KIM WILLIAMS and JANET WILLIAMS donated the hot lunch the PLA was required to provide for the Seabees and also sold lunch to PLA members.

The Seabees will be back to help us again in the spring and will be a great help as we dig out areas covered by mud in the winter.

General Manager's Report

Come Out To The Canyon

By Peter Schulze

Have you heard the big news on the Niles Canyon Scenic Railway? Maybe you do know . . . PEOPLE MAKE IT HAPPEN!

Almost 600 people get The Club Car and many more read the articles. Come out - look and see what we are doing and lend a hand - be a part of the fastest growing railroad club project going on today!

A man stopped by last weekend, a contributing sponsor I think, showed a lot of interest, and wanted to help. He only had one day a weekend and wanted to be careful with his back. "No problem," I said, "We have lots of projects - things that must be done to build a railroad - that are not heavy or exhausting." Why some jobs aren't even dirty or dangerous!

But seriously folks, if you are reading this and haven't come out to see your association building, please do. Come out on any Saturday or Sunday and help on one of the many projects. The PLA and the NCSRY needs our work NOW.

During the next few months we must expect rainy days, but don't worry, some work will go on. Heavy rains and cold winds are hard to contend with, but with a little forethought we'll get work done. Even if it is wet on a Saturday or Sunday morning, don't assume we won't be working, because we will.

The best way to find out what is going on is to contact Dexter, Frank Presley (415-796-3094), or myself.

My special thanks go to all the people who have worked so hard over the last five months. Your work is substantial and we are well on the way to having a two mile operation in the very near future.

First Mile Fund

The "First Mile Fund" forges ahead with donations from the following list of \$370. Donations to the fund stand at \$4262.50 as of the end of October. More donations are needed to pay for the spikes and the transportation of rail to the canyon. Our thanks go to those who have generously donated funds.

Richard & Clarice Anderson, Charles & Carol Barnes, Donald J. Brundage, Charles A. Jellison, Edouard LaGouche, Timothy J. Low, Mr. & Mrs. Craig L. Miller *, Alfred & Linda Nielsen, Leon D. Pace, Hermann & Elise Reiss, Trefry & Nellie Ross, Michael & Sandra Rumball, Christopher V. Schmidt, Stephen H. Slabach, Donald Tustin, John David & Myrlee Walker, Dudley Westler *, William & Phyllis Williams.

A * denotes a contribution of \$50 or more.

October Roll Call

The following people worked on various PLA projects during the month of October. Number of days worked was not available: B. Andrews, D. August, C. Barnes, B. Berger, C. Blake, M. Bozzini, L. Bradas, D. Burla, J. Cox, D. Day, J. Dillman, M. Duffy, T. Flippo, J. Follanshee, M. Iverson, J. Joseph, R. Leber, M. Maksel, M. McQuaid, H. Morrow, H. Norleen, P. Orth, J. Pierce, E. Powell, F. Presley, A. Ramsay, E. Ryan, J. Schrufer, Pa. Schulze, Pe. Schulze, S. Slabach, M. Snyder, A. Teruya, C. Walters, S. Wiley-Robertson, J. Williams, Craig Wilson, Ken Wilson, Mike Wilson, Kurt ?.

October 18: Provided hot lunch for Seabee reserve unit: Janet Williams, Kim Williams, J. Williams.

The Hot Box

Since we have a good chance of acquiring a backhoe, we wish to renew our request for some other items:

- 1) Chain link fence fabric, 8' posts, and hardware: CRAIG WILSON has done a tremendous job of getting this started. I estimate we need 3500 linear feet so we have a long way to go. Contact Craig, ED RYAN (415-793-7395), or PETER SCHULZE.
- 2) Galvanized pipe: We need substantial quantities of galvanized pipe in long lengths from 1/2" to 2" in diameter and pipe fittings.

Company Store

By Carol Sullivan

Our Christmas cards are here! The sets of eight scenes include Shays and train on Feather River Railway, Cab-forward at Donner, Sacramento Valley RR, V & T at Crown Point Trestle, and Baldwin #38 at Chinese. Cost: \$6.90/set at meetings; mail orders, add \$1.25 postage/packing for the first set, \$.30 each additional set to maximum of \$2.40. Send with check to PLA c/o Carol Sullivan, 1565 Seneca Lane, San Mateo CA 94402.

New Books: Basic Steam Loco. Mntnc., \$19.85; Early Dsl-Elec. & Elec. Locos., \$8.95; Grt. Yellow Flt, White, \$40.75; Hist. of RR Accidents, Shaw, \$7.80; Mod. Am Locos., \$21.95; The Northwestern Pac. RR, Vol. II, Stindt (autographed), \$28.45, RR Radio Freqs., PLA/Blake, \$4.50 (Nov. Mtg. Special: \$3.50); RR Spikes, Joyce, \$5.95; Southern Pacific 1901-1985, Hofsommer, \$40.25; Track Cyclopedia, 10th Ed., \$40.45 (member price).

Get your holiday orders to me by Dec. 5 (special orders by Nov. 24) and we'll try to get it to you at the December meeting in time for Christmas giving or receiving!

BOARD OF DIRECTORS

- President Michael McQuaid, (415) 846-4082
- Vice-President. Dexter Day, (415) 345-1790
- Recording Secretary Madeline Iverson
- Membership Secretary. Jim Evans
- P.O. Box 451, Burlingame, CA 94011-0451
- Treasurer Dave Rousar
- General Manager Peter Schulze, (415) 797-8613

The Club Car

The Club Car is the monthly newsletter of the Pacific Locomotive Association and its members. All submissions will be considered for publication and will only be edited for space and clarity.

Editor. Alan Teruya
744 Olivina Ave, Livermore, CA 94550
(415) 455-1269

Build Your Own Pickering Lumber Company #12

By Edouard Lagache

It has been much too long since #12 and her sisters announced their presence with smoke, steam, and whistles. While the operations drought seems to be finally coming to an end, at my house #12 has already run dozens of operations (Well, sort of.).

To be exact, my H0 scale mode of #12 has become a regular part of my layout (even if logging line construction is somewhat behind schedule). For those who are model railroaders as well as railfans, it turns out that it is possible to make a very nice model of #12 without diverting your PLA contributions to brass.

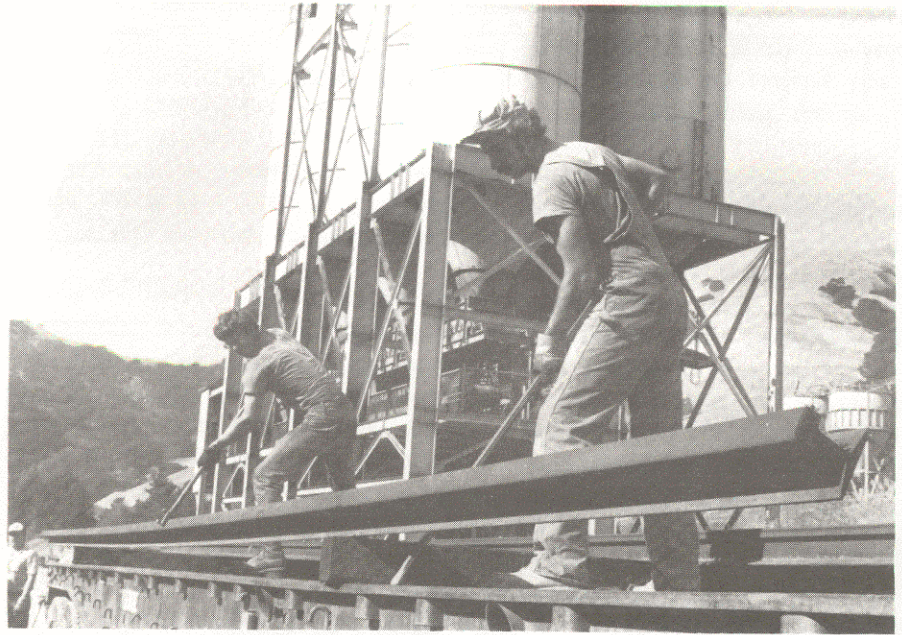
I went out and built the stock MDC (Roundhouse) 3-truck Shay model. This model doesn't exactly capture #12 as presently restored, but I wanted an old-fashioned look. As far as I can tell, the MDC model can be brought into close correspondence by: 1) Using the straight stack instead of the diamond one; 2) Enclosing the cab using sheet styrene; 3) Carving out of wood or plastic a smaller sandbox for the tender; 4) Not installing the water siphon; and 5) Adjusting the piping to match the prototype.

The important trick is in the painting and decaling. I decided to avoid lacquer based paints because I found that Pactra Flat Insignia Red (106SF, SF-4) gives a faded burgundy look that is perfect for an iron-house earning its keep the old-fashioned way.

Finally, a look at the Microscale decal catalog reveals that set #87-0008 contains the needed symbols for Pickering Lumber Company. The stripes were another matter. I used Microscale 4-inch scale stripes (#87-214), which I am almost certain is too big, but the model looks fine. I guess a little exaggeration doesn't hurt!

So there it is. For under \$50 (and several months work) you can have a "do it yourself" Shay that can fill in when her prototype is idle.

P.S. Don't work on this model on weekends; your help is needed elsewhere.



John Schrufer (left) and Mike Wilson roll a rail off the truck. (Minus 2 pts. for style, John.)

Photo by Alan Teruya

OCTOBER MEETING

By Madeline Iverson

The October meeting of the general membership of the PLA was called to order at 8:10 PM by President MIKE McQUAID. The minutes of the previous board and general meetings were read and approved. Treasurer Dave Rousar read the expenses for the month and indicated that our expenses had exceeded our income significantly.

Membership Secretary JIM EVANS presented CHARLIE SMITH with a PLA pin and acknowledged his Life Membership status. Four people applied for Associate Membership, Robert S. Allen, Lori Devlin, Sam Robbins, and Donald Ray. All four were subsequently voted in.

Publicity Chairman ALAN RAMSAY discussed the displays at the Niles Flea Market and the Sunol Bed Races. He felt that we received much support from residents of the area.

CAROL SULLIVAN reported that the main new item in the Company Store is Christmas cards with train drawings. She indicated that last month's sales were pretty good and that the docents at Railtown are sending us \$700 for things they sold on consignment.

STEVE SLABACH reported that everything was going smoothly with the environmental study and that the archaeologist found no

Indian artifacts. He indicated that a possible time schedule for a lease with the County of Alameda might be early in 1987.

Earth work, drainage, and tie plugging will continue for the next six months. Under Old Business the approval of a six month budget for the period ending December 31 was passed. The budget was for the six months because there is no way to predict income once operations start in 1987.

Under New Business the question of the railroad museum's name was brought up. Letters concerning the name from VIRGIL STAFF and CRAIG WILSON had been read earlier in the meeting. A motion was passed to have the Board make a recommendation on the appropriateness of a name change.

A special appropriation was passed to pay for the archaeological study done in the canyon.

President McQuaid appointed two longstanding PLA members to club positions: DUDLEY WESTLER is the Librarian and GEORGE CHILDS, JR. is the Historian.

A motion was made and carried to buy 150 ties in December if the Buy-A-Tie program is underway by then.

Club Car editor ALAN TERUYA said that he wants photos for the December year-end issue of the newsletter.

Nov. Meeting

To be considered for Associate Membership: Ed and Marie Echols, Paul Veltman, Gordon Richardson, and Paul Veltman of Fremont, John Blunden of Livermore, and Leonard Coffin of Pleasanton.

Frank Presley of Newark will be considered for Active Membership. Frank has been a devoted participant in the Niles Canyon project and will be a beneficial addition to the Active Membership.

For entertainment at the November meeting Jim Evans will show video tapes of railroading in British Columbia.

At the last meeting Robert Allen, Lori Devlin, and Donald Ray were voted in as Associate Members.

Regular meetings are held on the third Friday of every month at St. Christopher's Church at the corner of Via Toledo and Hacienda in San Lorenzo.

PLA Calendar

FA

- Nov. 21 Regular Meeting
- Nov. 22 & 23 Work Parties, Niles Canyon and Castro Point
- Nov. 29 & 30. .Work Parties, NCSRY or CP
- Dec. 1. . . Deadline, September Club Car
- Dec. 6 & 7. . .Work Parties, NCSRY or CP
- Dec. 13 & 14. .Work Parties, NCSRY or CP
- Dec. 19Regular Meeting
- Dec. 20 & 21. .Work Parties, NCSRY or CP
- Dec. 25Merry Christmas
- Jan. 16Regular Meeting

For work projects in Niles Canyon please contact Vice-President Dexter Day (415-345-1790) or General Manager Peter Schulze (415-797-8613) for details. For projects at Castro Point contact Master Mechanic Ray McAllister (415-479-5249).

Work Projects

The NCSRY has a number of important projects that no one has taken on. Please organize one of the activities, do the job, and become famous and fulfilled by helping to build our railway.

- 1: Dig in quarter-mile posts MP 33.75 to MP 36.25 (10 locations).
- 2: Cut brush 10' from the closest rail between Bond St. and Ki-lite crossing.
- 3: Clean joint bars off all rail at San Jose. (This needs to be done ASAP.)
- 4: Install mainline ties (7" x 9") from Kilkare Rd. westward.
- 5: Cut weeds & brush at Alameda Creek storage yard.
- 6: Make-up portable project bulletin board for display at work locations.

One on-going project that really needs help is cleaning and plugging ties between Dresser and Farwell bridges. We need help on this ASAP. If you can help on this or one of the other projects please contact Peter Schulze.