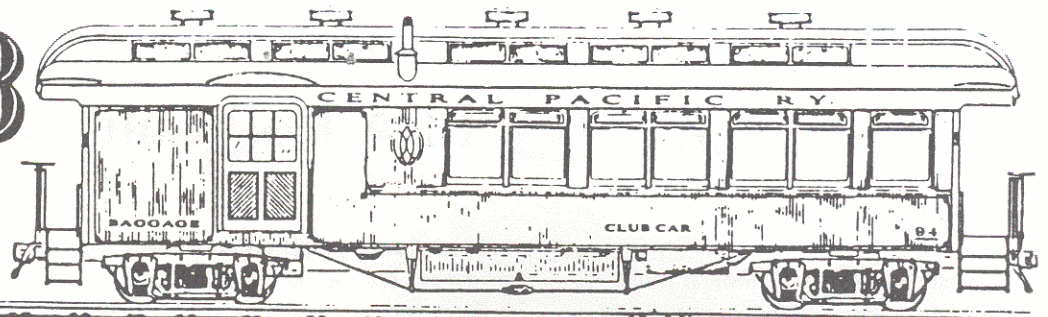


# THE CLUB CAR



Bulletin No. 288

Pacific Locomotive Association

June 1987

## Meeting Gets Preparations For NCRy Started

By Peter Schulze

On May 17 30 PLA members got together at Brightside to discuss the implementation of operations in Niles Canyon. The purpose of the meeting was to identify people willing to take on various projects and coordinate these efforts so we will begin operation of #M-200 within 90 days of receiving a lease.

The topics discussed were: 1) Track construction and maintenance; 2) Concessions at Sunol; 3) Operating qualifications and procedures; 4) Movement of rolling stock to Brightside; 5) Site preparation at Brightside; 6) Basic utilities; and 7) Site preparation at Sunol.

I am most pleased to report that all but two of the projects have coordinators. We need a few more and, as always, more workers.

Without detailing all that was covered, a few results are noteworthy:

1) In general, we have the resources to begin operations within 90 days of our lease.

2) Only 5 or 6 projects need more than \$100 to move ahead.

3) The group came up with the idea of converting the tool car into a rolling Company Store. (I think this was the most important idea to come out of the meeting.) There is a lot of work to do. CAROL SULLIVAN, as Concessions Manager, is overall coordinator so please contact her; in the next few months she'll need a lot of help.

A complete summary of our implementation effort has been prepared and published by JOEL COX and ED RYAN and will be available at our next meeting. Also, many project can be started before the actual lease is obtained so don't hold back!

*Vice-President and Operations Manager's Report*

## Looking Back on a Good Year

By Dexter Day

It's been over a year since we started to build a railroad in Niles Canyon. I look back and can't believe how far we have come. With the material we had at the start it could have taken four years to build the mainline between Sunol and Niles, but, with the effort and money everyone put in and with the material we got through donations and swaps, it looks like we have a chance to complete the mainline sometime next year.

A year ago we were trying to figure out how to lay a rail straight with a crew of fifteen, and, when we got ten rail joints done, we were sure proud of it. By the end of the summer the record was 33 joints in one day without one having to be redone.

Last summer was a learning experience for most of us, not only in track laying but in getting used to the weather in the canyon. I think that we all missed the sea breezes of bay. But we are all a year more experienced now. Just a few weeks ago a crew of six laid 13 track joints in a day. I have said it once and I will say it again; no matter what the project is, our crews can handle it.

This past year has also been a year of diversification. To get the material we needed our crews have spent long and hard hours at different locations in the Bay Area. These projects took work time away from Niles Canyon, but we are better off now because of these small "SWAT" teams. A lot of these projects came at bad time since they took money out of the treasury when we didn't have much, but the PLA survived and we now have the material to get the job done.

During the past year we got a backhoe that is now earning its keep. As our crews get more familiar with this machine they do more and more with it. This is one investment that will continually pay us back with its work. That leaves the Hough to do

smaller jobs that doesn't strain it so much. At this time the Hough is assigned to track crew to set and drag rail. Yes, the old Hough is tired but not RETired.

Now that we have most of the material we need, this summer will see our crews split between getting more material and building the railroad. However we will be concentrating on getting material until we get the green light to put down the second rail; then we'll have an all out effort to get this railroad running between Sunol and Brightside within 90 days.

Well, the past year has gone by pretty fast and we have accomplished a lot. Next year we'll be able to stand back and tell war stories on what it took to build this railroad. Have a good month and I hope to see you out working in the canyon.

## Making Tracks Fund

The following contributed to the MAKING TRACKS fund between April 15 and May 15. The donations totaled over \$1100. Donations of \$100 or more are denoted by an \*.

Al Harvey, Al Fowler, Sam McCracken, Robert McLaughlin, Steve Slabach, Ted Wurm, John and Ninya Follansbee, Donald E. Tustin, Stephen Buchner, William Radcliffe, William Williams, Curt Brohard, L. Harrison, Mike NeSmith, Madeline Iverson, Fred Millhauser\*, Ron Peterson\*, John Claudino, David Walker, Peter Goodier, Thomas V. Jones, W.E. Raab, Christopher Schmidt, Charles Givens, Ben Badaracco, Alfred J. Fisher, M.D., Edward Meyer, George F. Clough, Lieutenant Donald Brundage, Jr., Herb Norleen, Howard Wise, Charles Barnes, and Ronald Vane.

# May Meeting

By Madeline Iverson

Highlighting the May 15 General Meeting of the PLA were the voting in of six new members, the SP donation, the proposed fare/donation schedule, the nominees for the 1987-88 offices, the long-awaited negative declaration and the film shown by TOM HRUSKO.

Voted into association membership were LESLEY CLARK, MATT GREBE, WILBUR HAM, BARBARA HUMES, ROGER LEVENSON and CRAIG MILLER.

The secretary read the correspondence. The high point was SP's letter donating the rail move from Richmond to Levin Metals. This saved the club over \$2500. Also of note was a \$250 donation from the Northern Calif. Railroad Club to help us in Niles Canyon.

C.G. HEIMERDINGER, reporting for the Fair Fare Committee, made a motion setting fares for \$M-200. After much discussion this motion was amended to substitute the word "donation" for "fare" since we do not want to stop people who are unable to pay from riding the train. The motion, which was seconded and carried, now reads: "The base donation requested between Sunol and Brightside be \$2 for adults, \$1 for children (to 14) occupying a seat, \$1 for senior citizens and \$5 per family. Active and associate members who display their membership cards may ride free on a space available basis."

HEIMERDINGER, heading the Nominating Committee, announced the following candidates for 1987-88 offices: Pres.: MIKE McQUAID, ED RYAN and PETER SCHULZE; V-P: MIKE BOZZINI and MADELINE IVERSON; Rec. Secretary: DAVE BURLA and BRIAN WISE; Membership Sec.: JIM EVANS; Treas.: BURNEDA ANDERSON and MATT MAKSEL. There were no further nominations from the floor, so nominations were closed.

A discussion of election procedures followed. Persons qualified to vote are Active Members in good standing (paid up dues). Ballots need to be returned to the

# PLA Roll Call

The following people worked at least one day during the period from mid-April to mid-May: Peter Schulze, Joel Cox, Buzz Berger, Ed Ryan, Frank Presley, Mike Bozzini, "Bones" Andrews, Phil Orth, Charlie Blake, Steve Slabach, George Gavoletz, Bob Graham, Mike Duffy, Liz Reimers, Madeline Iverson, Bob Wang, Brad Huie, Dave August, Chuck Barnes, John Pierce, Al Fowler, Alan and David Siegwarth, Mike Price, Dexter Day, Matt Maksiel, Eddie Chase, Rich Gill, Pat Lewis, Alan Teruya, Mike McQuaid, Art Baker, Carol and Mike Sullivan.

recording secretary by June 12 in order to be considered valid.

Since the term "majority" has lead to confusion in the interpretation it was agreed to place on the ballot a resolution allowing there to be a runoff vote of the top two persons by Active Members at the June general meeting if there is no clear majority (one more than one-half of the ballots returned). The bylaws will be reworked by next year to clarify the definition of "majority".

President McQUAID reported that the County has filed a negative declaration (environmental report) and the Department of Public Works is working on a contract. CRAIG WILSON reported that the electrical permit had been filed and we may have a hook up by mid-June. PAT LEWIS is heading this project.

General Manager PETER SCHULZE reported that a big dent has been made in the clean-up at Fremont yard. His goals include preparing for \$M-200 operations. DEXTER DAY reported that the hand cars will be ready in 40 days.

Entertainment for the evening was provided by TOM HRUSKA from Mid-Continent in North Freedom, WI. The film title was "Whistles in the Wind". It was a great museum film and was an excellent example of what the museum has done.

## General Manager's Report More Interim Work

In addition to the implementation meeting reported elsewhere in the Club Car, much work has been accomplished at Brightside. Our primary efforts are those outlined in our encroachment permits from Alameda County: Protection of ties, clearing of ditches, reducing brush and minor grading and earthwork around Brightside.

In addition, until the county is able to grant us our lease, we will continue the cleaning and plugging of ties from MP 32.9 eastward to the Ki-Lite crossing. This should take 6 to 8 working days. If time and enthusiasm allow another job, BONES ANDREWS and DEXTER DAY will be coordinating the securing of a single rail from west of the Dresser bridge eastward to and across the Farwell Bridge. It is great to see rail already going down on our SP connection and each day invested shortens the time until our rolling stock is back together.

Lastly we have an opportunity to acquire two truck loads of 113 and 119 lb. rail from the Pleasanton and Livermore areas for use in the 1900' curve from MP 32.6 to 32.9. Please contact me to help with this job scheduled for Saturday, June 27.

Each of these jobs are just the interim jobs that will help us in the months after the \$M-200 operation is going. As stated before, all efforts will go to operational start-up as soon as the lease is signed.

## Company Store

New paperbacks from Kalmbach: Guide to Tourist Rys. and Museums, American Shortline Ry. Guide, 3rd Ed., and Train Watcher's Gde.

We'll tryto have Ted Wurm's in-print books available for the June meeting. LIZ REIMERS will run the store; see her for your back orders, payments, and special requests.

### BOARD OF DIRECTORS

- President . . . . . Michael McQuaid, (415) 846-4082
- Vice-President. . . . . Dexter Day, (415) 345-1790
- Recording Secretary . . . . . Madeline Iverson
- Membership Secretary. . . . . Jim Evans
- P.O. Box 451, Burlingame, CA 94011-0451
- Treasurer . . . . . Dave Rousar
- General Manager . . . . . Peter Schulze, (415) 797-8613

### The Club Car

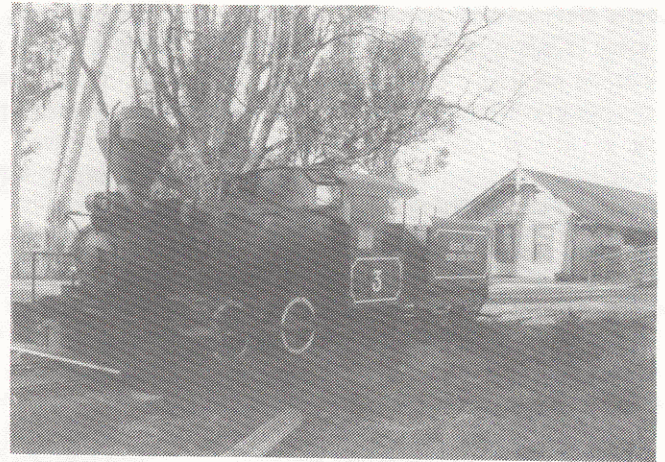
The Club Car is the monthly newsletter of the Pacific Locomotive Association and its members. All submissions will be considered for publication and will only be edited for space and clarity.

Editor. . . . . Alan Teruya  
744 Olivina Ave, Livermore, CA 94550  
(415) 455-1269

## Moving #3 to RAILFAIR

Text and Photos By Alan Teruya

On the morning of April 13 a small group of PLA workers went out to move #3 to San Francisco for the state museum's Railfair. #3 was being stored at Ardenwood Historical Park in Newark, only a stone's throw from the station where visitors boarded the park's narrow-gauge, horse-drawn railway (right).



East Bay Regional Parks District provided the breakaway flatbed truck which would take #3 to San Francisco's Embarcadero for the five-day event. As #3 was being winched onto the truck, however, the tender came off of the rails. In the picture on the left Michael Sullivan is analyzing the situation.

Fortunately the tender was re-railed with EBRPD equipment and #3 was soon on its way to San Francisco. At the right #3 crosses the Dumbarton Bridge at 55 MPH.

The front footsteps dragged on the ground and #3 had to be pulled the last few feet with a winch, but otherwise the unloading went smoothly. Two days later #3, the other locomotives and various passenger and freight cars were ready for the thousands that came to the Railfair.

[Note: The following people, who helped move #3 from San Francisco to Niles Canyon, should be added to the list of workers in last month's article on the Railfair: TIM FLIPPO, LIZ REIMERS, BRIAN WISE, and an unknown passerby who stopped to help.



---

---

## June Meeting

To be considered for Associate Membership at the June meeting: Elaine Ames of Fremont, Thomas Clark of Fremont, Darrell Dennis of Union City, David Filson of Pleasanton, Elizabeth Kooy of Union City, James A. McDaniel of Richmond.

Entertainment will be a presentation by Ted Wurm on the narrow gauge railroads of New Zealand and Tasmania.

Regular meetings are held at 8:00 on the third Friday of every month at St. Christopher's Church at the corner of Via Toledo and Hacienda in San Lorenzo.

## PLA Calendar

ALL INVITED!!!

GRAND MASS MEETING TO BUILD NCRy!!!

At Brightside, California  
Each Saturday, 9 AM or Sunday, 10 AM  
Age, skill, experience or preference  
for narrow gauge not a factor.

June 19 . . . . . Regular Meeting  
June 30 . . . . . Deadline, June Club Car  
July 6 . . . . . Club Car Goes to Printer  
July 17 . . . . . Regular Meeting  
Aug 21 . . . . . Regular Meeting

For work projects in Niles Canyon please contact Vice-President Dexter Day (415-345-1790) or General Manager Peter Schulze (415-797-8613) for details. For projects at Castro Point contact Master Mechanic Ray McAllister (415-479-5249).

## *The Hot Box*

Your association continues to need tools (and people) to do our building projects for the Niles Canyon Railway.

- 1) Two good or new condition heavy-duty 6-volt automobile batteries. Please contact Dave Burla.
  - 2) Jack Hammer: We need a 90# pavement breaker jack hammer to be donated or loaned for a few weekends this year. Call Peter.
  - 3) Stationary Compressor: Gas or diesel powered, 100+ cubic feet per minute to equip #103 for train and MOW service at Niles Canyon. Call George Childs, (415)653-0354.
  - 4) Chain link fence. 8' fence fabric and hardware, especially full length 2" posts and 4" and 6" gate posts. Contact Craig Wilson.
- 
-